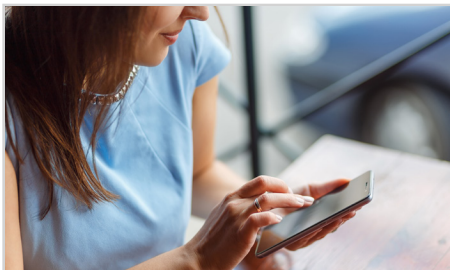


ICEmulti-property

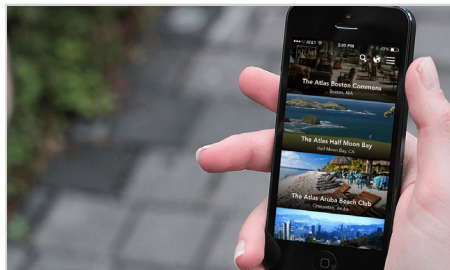
Create an efficient brand strategy and maintain a constant connection before, during, and after their stay.



ULTIMATE MOBILE EXPERIENCE

ICEmulti-property is an offering for hospitality businesses searching for a response to the growing use of mobile technology, and now, we have developed a version of our product that is tailored to meet the needs of hotel brands and management groups.

- Provide a mobile portal to your entire portfolio of properties
- Easily accessible to guests through any mobile device
- Link to property-specific guest services through one brand-level interface



EXCLUSIVE FEATURES FOR BRANDS

Arrange your properties in a sleek, engaging interface that can be viewed as either a list or a map. This interface can link to each of your property's guest services, such as room service ordering and housekeeping requests. Searches can be conducted with various filters to help guests find the right selection.

- Reservation booking
- Loyalty program account access
- Social sharing
- Link to live support chat with hotel staff or concierge



MINIMAL INVESTMENT REQUIRED

While some brands invest millions for an internal research and development team to create and test an app, a partnership with Intelity eliminates this hassle.

- More experience in creating mobile apps for hotels than any other
- Flexible, cost-effective pricing packages
- Products based on feedback from hundreds of clients and their guests
- Custom design for each app based on client specifications

KEY FEATURES



KEYLESS ROOM ENTRY

Give your guests the option to bypass the front desk entirely, alleviating demand on your staff and providing an efficient check-in and -out that can increase guest satisfaction drastically.



LOCATION-BASED FEATURES

Use mobile geo-fencing technology to send specific messages to guests within close proximity of your property.



SUPPORT

Nearly 24/7 technical support from our team of experts to ensure that your services work as planned.

Available on:



Easy-to-use guest-facing interface that is compatible with both Apple and Android devices and available in multiple languages.

Last updated:
Feb. 13, 2018